



# Skyline T-Park

More parking in less space...anywhere.

## T-Park Technology - for standalone high density, cost effective and intelligent parking solutions

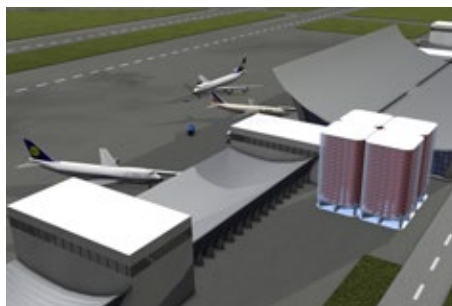
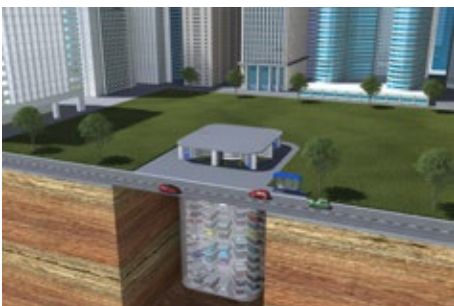
Rapid, reliable and flexible car transport technologies and the latest in car shuttle design ensure the highest levels of customer service and return on investment.

### Patented innovation that sets new standards

- Freestanding tower for above or below ground
- Car retrieval times of under 60 seconds
- Double the density of conventional parking
- Up to 200 parking spaces capacity on 22m x 22m footprint
- Secure & spacious vehicle lobbies
- Between 5 and 13 parking levels
- Up to 8 entry/exit lobbies

### Typical application areas

- New installations incl.
  - City centres
  - Airports
  - Commercial offices
  - Premium residential developments
  - Hotels
  - Retail
  - Car dealerships



# Skyline T-Park

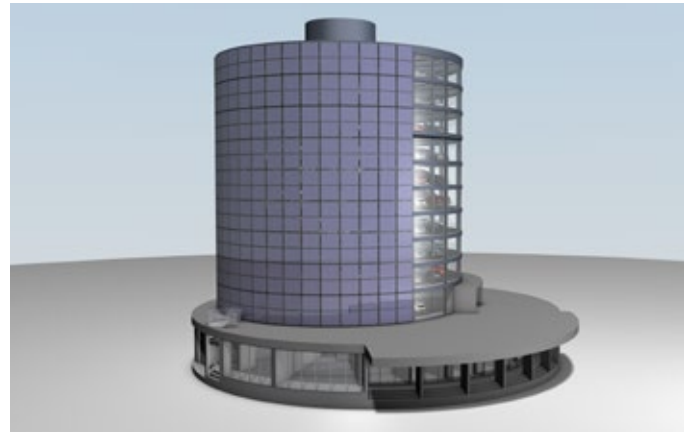
More parking in less space...anywhere.

With the T-Park system Skyline Parking offers the highest parking density and design flexibility.

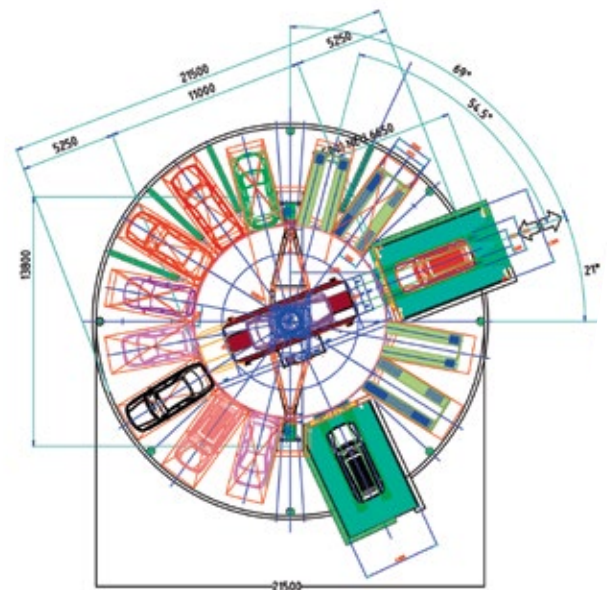
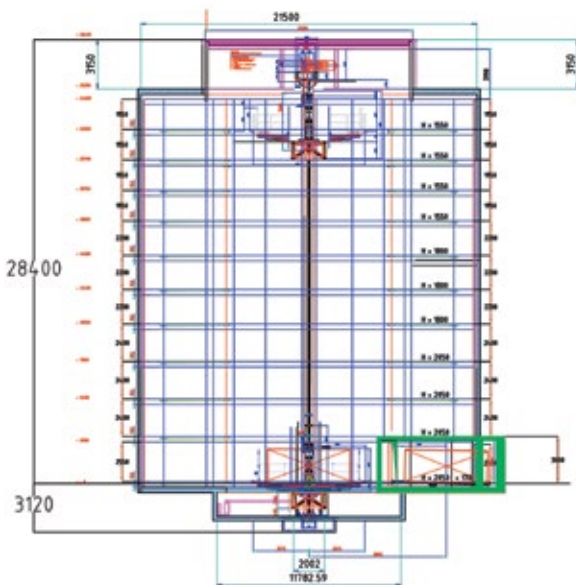
Choose the right composition for **YOUR** project:

- Number of parking places
- Number of vehicle entry and exit lobbies
- Number of parking levels
- Free-standing tower, inside buildings or below ground

To understand how to answer these questions ask for the **Skyline Parking APS Design Guide** ([info@skyline-parking.com](mailto:info@skyline-parking.com)).



|                                  |     |     |     |
|----------------------------------|-----|-----|-----|
| Number of Levels                 | 8   | 10  | 12  |
| Number of Parking Spaces         | 128 | 160 | 192 |
| Footprint Diameter               | 22m | 22m | 22m |
| Building height                  | 21m | 26m | 31m |
| Number of entry and exit lobbies | 2-3 | 2-3 | 2-3 |



*Example case: Skyline T-Park, 16 parking spaces per floor, 11 parking levels (including entry/exit level), 3 different floor heights, 1 vehicle entry/exit lobby / 1 exit lobby*